

7 Proximity Sensor (Proximity Switch)

TK

-

Model

TK

Inductive

TC

Capacitive

Cable connector

Blank

No connector

I

Straight

L

With angle

Shape

12

M12

18

M18

22

M22

30

M30

S

Square

E

Easy mounting square shape

Q

Short square

H

Protuberant

Column shape

Output

N

NPN

NO

NC

NPN

NC

P

PNP

NO

PC

PNP

NC

X

DC 2 wires

NO

XC

DC 2 wires

NC

Y

AC 2 wires

NO

YC

AC 2 wires

NC

Sensing distance

2

2mm

4

4mm

5

5mm

8

8mm

10

10mm

15

15mm

20

20mm

35

35mm

Output current

B

100mA

C

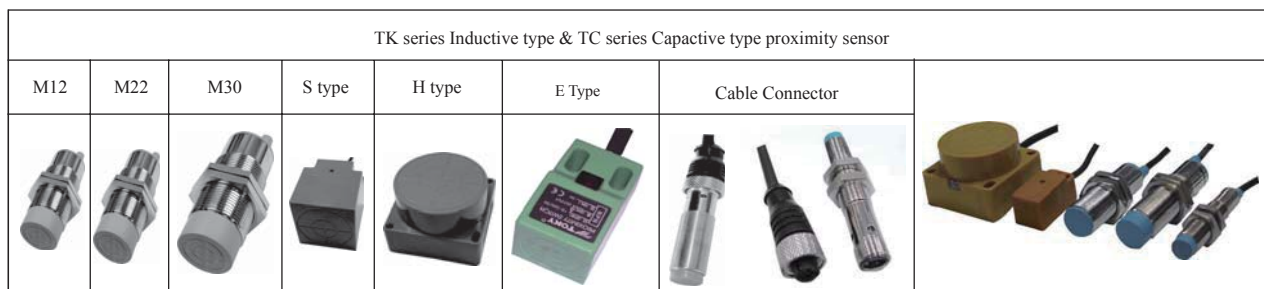
200mA

D

300mA

Appearance photo

Appearance photo



Ordering Code

7-1 TK column shape inductive proximity sensor

Model	Output type	Sensing distance	Effective distance	Frequency	Protection level	Code
TL-EN(NC)5B / TL-EP(PC)5B	NPN/PNP NO(NC)	5mm	4mm	500HZ	IP66(IEC)	A0030TK01
TK-SN(NC)5C/SP(PC)5C	NPN/PNP NO(NC)	5mm	4mm	500HZ	IP66(IEC)	A0040TK01
TK-SN(NC)8C/SP(PC)8C	NPN/PNP NO(NC)	8mm	6mm	200HZ	IP66(IEC)	A0065TK01
TK-SN(NC)10C/SP(PC)10C	NPN/PNP NO(NC)	10mm	8mm	200HZ	IP66(IEC)	A0065TK01
TK-SN(NC)20C/SP(PC)20C	NPN/PNP NO(NC)	20mm	16mm	100HZ	IP66(IEC)	A0080TK01
TK-SN(NC)35C/SP(PC)35C	NPN/PNP NO(NC)	35mm	28mm	50HZ	IP66(IEC)	A0110TK01
TK-SY(YC)10D	AC NO(NC)	10mm	8mm	20HZ	IP66(IEC)	A0080TK01
TK-SY(YC)20D	AC NO(NC)	20mm	16mm	10HZ	IP66(IEC)	A0085TK01
TK-SY(YC)35D	AC NO(NC)	35mm	28mm	5HZ	IP66(IEC)	A0125TK01

7-2 TK normal type inductive proximity sensor

Model	Output type	Sensing distance	Effective distance	Frequency	Protection level	Code
TK-HN(NC)10C/HP(PC)10C	NPN/PNP NO(NC)	10mm	8mm	200HZ	IP66(IEC)	A0065TK01
TK-HN(NC)20C/HP(PC)20C	NPN/PNP NO(NC)	20mm	16mm	100HZ	IP66(IEC)	A0080TK01
TK-HN(NC)35C/HP(PC)35C	NPN/PNP NO(NC)	35mm	28mm	50HZ	IP66(IEC)	A0110TK01

(B) Protuberant type H series AC inductive proximity sensor

Model	Output type	Sensing distance	Effective distance	Frequency	Protection level	Code
TK-HY(YC)10D	AC NO(NC)	10mm	8mm	20HZ	IP66(IEC)	A0100TK01
TK-HY(YC)20D	AC NO(NC)	20mm	16mm	10HZ	IP66(IEC)	A0135TK01
TK-HY(YC)35D	AC NO(NC)	35mm	28mm	5HZ	IP66(IEC)	A0145TK01

(C) Column type series inductive proximity sensor

Model	Output type	Mounting type	Sensing distance	Effective distance	Frequency	Protection level	Code
TK-8N2B / 8P2B	NPN/PNP NO	Non-flush	2mm	1.6mm	400HZ	IP66(IEC)	A0065TK01
TK-12N(NC)2C/12P(PC)2C	NPN/PNP NO(NC)	Flush	2mm	1.6mm	600HZ	IP66(IEC)	A0055TK01
TK-12N(NC)4C/12P(PC)4C	NPN/PNP NO(NC)	Non-flush	4mm	3.2mm	400HZ	IP66(IEC)	A0045TK01
TK-18N(NC)5C/18P(PC)5C	NPN/PNP NO(NC)	Flush	5mm	4mm	400HZ	IP66(IEC)	A0055TK01
TK-18N(NC)8C/18P(PC)8C	NPN/PNP NO(NC)	Non-flush	8mm	6.4mm	200HZ	IP66(IEC)	A0065TK01
TK-22N(NC)10C/22P(PC)10C	NPN/PNP NO(NC)	Non-flush	10mm	8mm	200HZ	IP66(IEC)	A0070TK01
TK-30N(NC)10C/30P(PC)10C	NPN/PNP NO(NC)	Flush	10mm	8mm	100HZ	IP66(IEC)	A0075TK01
TK-30N(NC)15C/30P(PC)15C	NPN/PNP NO(NC)	Non-flush	15mm	12mm	100HZ	IP66(IEC)	A0085TK01
TK-18Y(YC)5D	AC NO(NC)	Flush	5mm	4mm	20HZ	IP66(IEC)	A0080TK01
TK-18Y(YC)8D	AC NO(NC)	Non-flush	8mm	6.4mm	20HZ	IP66(IEC)	A0080TK01
TK-22Y(YC)10D	AC NO(NC)	Non-flush	10mm	8mm	20HZ	IP66(IEC)	A0080TK01
TK-30Y(YC)15D	AC NO(NC)	Non-flush	15mm	12mm	20HZ	IP66(IEC)	A0095TK01
TK-18X5B	DC NO	Flush	5mm	4mm	80HZ	IP66(IEC)	A0080TK01

7-3 TC normal capacitive proximity sensor

Model	Output type	Mounting type	Sensing distance	Effective distance	Frequency	Protection level	Code
TC-18N(NC)8C/18P(PC)8C	NPN/PNP NO(NC)	Non-flush	8mm	1~8mm	50HZ	IP66(IEC)	A0120TK01
TC-30N(NC)15C/30P(PC)15C	NPN/PNP NO(NC)	Non-flush	15mm	3~15mm	20HZ	IP66(IEC)	A0160TK01
TC-18Y8C/TC-18YC8C	AC NO(NC)	Non-flush	8mm	1~8mm	50HZ	IP66(IEC)	A0180TK01
TC-30Y15C/TC-30YC15C	AC NO(NC)	Non-flush	15mm	2~15mm	20HZ	IP66(IEC)	A0200TK01

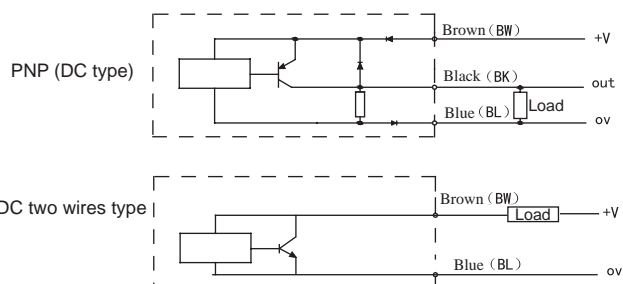
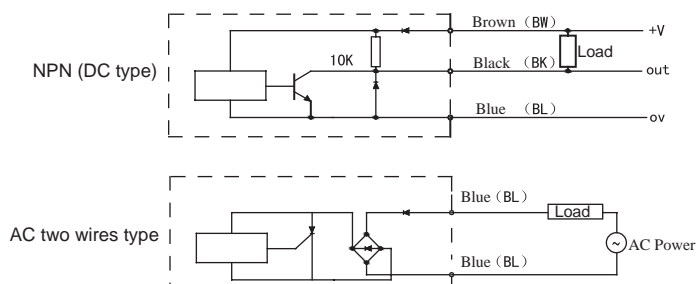
7-4 TKI(L) column shape inductive proximity sensor with cable connector

Model	Output type	Mounting type	Sensing distance	Effective distance	Frequency	Protection level	Code
TKI(L)-12N(NC)2C/12P(PC)2C	NPN/PNP NO(NC)	Flush	2mm	1.6mm	600HZ	IP66 (IEC)	A080TK01
TKI(L)-12N(NC)4C/12P(PC)4C	NPN/PNP NO(NC)	Non-flush	4mm	3.2mm	400HZ	IP66 (IEC)	A080TK01
TKI(L)-18N(NC)8C/18P(PC)8C	NPN/PNP NO(NC)	Flush	5mm	4mm	400HZ	IP66 (IEC)	A090TK01
TKI(L)-30N(NC)10C/30P(PC)10C	NPN/PNP NO(NC)	Flush	10mm	8mm	100HZ	IP66 (IEC)	A0100TK01
TKI(L)-30N(NC)15C/30P(PC)15C	NPN/PNP NO(NC)	Non-flush	15mm	12mm	100HZ	IP66 (IEC)	A0110TK01
TKI(L)-18Y(YC)5D	AC NO(NC)	Flush	5mm	4mm	20HZ	IP66 (IEC)	A0100TK01
TKI(L)-18Y(YC)8D	AC NO(NC)	Non-flush	8mm	6.4mm	20HZ	IP66 (IEC)	A0110TK01
TKI(L)-18Y(YC)15D	AC NO(NC)	Non-flush	15mm	12mm	20HZ	IP66 (IEC)	A0120TK01
TKI(L)-18X5B	DC NO	Flush	5mm	4mm	80HZ	IP66 (IEC)	A0100TK01

1 Digital Voltage Ampere Meter
2 Digital Counter
3 Frequency meter
4 Timer Relay
5 Temperature Controller
6 Sensor Meter
7. Proximity Sensor
8 Solid State Relay
9. Rotary Encoder Coupling
10. Paperless Recorder
11 Thermocouple CT / PT



Connecting drawing



Serial & parallel connection

